

Rotary Panel RF Remote Controller

Model No.: PK1, PK2, PK3

Rotary dimming/1-3 color/Wireless remote 30m distance/CR2032 battery



PK1
1 Zone Dimming



PK2
1 Zone CCT



PK3
1 Zone RGB

CE RoHS LVD RED

Features

- Apply to single color, dual color or RGB LED controller.
- Rotate knob to change RGB color, color temperature or brightness, support long press or twice click operation.
- Each remote can match one or more receiver.
- CR2032 battery powered.
- Removeable and stick anywhere easily, or mount on wall use panel base.

Technical Parameters

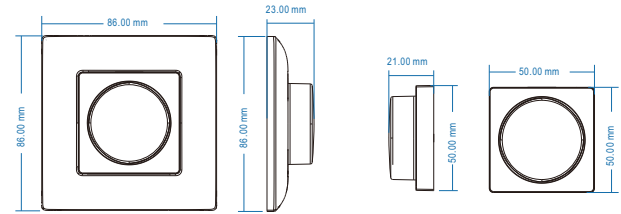
Input and Output	
Output signal	RF(2.4GHz)
Working voltage	3VDC(CR2032)
Working current	< 5mA
Standby current	< 10µA
Standby time	1 year
Remote distance	30m(Barrier-free space)

Warranty	
Warranty	5 years

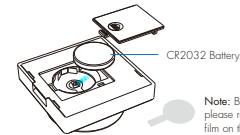
Safety and EMC	
EMC standard (EMC)	ETSI EN 301 489-1 V2.2.3 ETSI EN 301 489-17 V3.2.4
Safety standard(LVD)	EN 62368-1:2020+A11:2020
Radio Equipment(REDE)	ETSI EN 300 328 V2.2.2
Certification	CE,EMC, LVD,RED

Environment	
Operation temperature	Ta: -30°C ~ +55°C
IP rating	IP20

Mechanical Structures and Installations

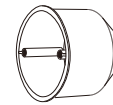


Replace battery:

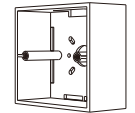


Note: Before the first use, please remove the protective film on the battery.

Typical base as below:

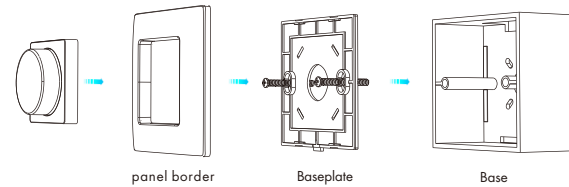


European style



86 size

Installation diagram:



To fix the panel, two options are offered for selection:

Option 1: fix it on the wall with two screws.

Option 2: adhere it to the wall with pasteur.

Knob function

PK1 Single color dimming remote

- Push: Turn on or off light.

After turn on light:

- Rotate: Rotate knob to adjust brightness(2.5 turns, 50 levels).
- Long push[1-6s]: Continuous 256 levels brightness adjustment.

PK2 Color temperature remote

- Push: Turn on or off light.

After turn on light:

- Rotate: Rotate knob to change color temperature or brightness (2.5 turns, 50 levels).
- Push twice: Switch between color temperature or brightness adjustment.
- Long push[1-6s]: Continuous 256 levels brightness adjustment.

PK3 RGB remote

- Push: Turn on or off light.

After turn on light:

- Rotate: Rotate knob to change RGB color (3 turns, 60 colors) or brightness (2.5 turns, 50 levels).
- Push twice: Switch between RGB color or brightness adjustment.
- Long push[1-6s]: Continuous 256 levels brightness adjustment.

Safety information

1. Read all instructions carefully before you begin this installation.
2. When installing battery, pay attention to the battery positive and negative polarity.
 - A long time without the remote control, remove the battery.
 - When remote distance becomes smaller and insensitive, replace the battery.
3. If no response from the receiver, please re-match the remote.
4. Gently handle remote, beware of falling.
5. For indoor and dry location use only.

Match Remote Control (two match ways)

End user can choose the suitable match/delete ways. Two options are offered for selection:

Use the controller's Match key

Match:

Short press match key, immediately push the knob. The LED indicator fast flash a few times means match is successful.

Delete:

Press and hold match key for 5s to delete all match, The LED indicator fast flash a few times means all matched remotes were deleted.

Use Power Restart

Match:

Switch off the power, then switch on power, repeat again. Immediately push the knob 3 times. The light blinks 3 times means match is successful.

Delete:

Switch off the power, then switch on power, repeat again. Immediately push the knob 5 times. The light blinks 5 times means all matched remotes were deleted.